

San Luis Gonzaga and Santo Angel Custodio Missions

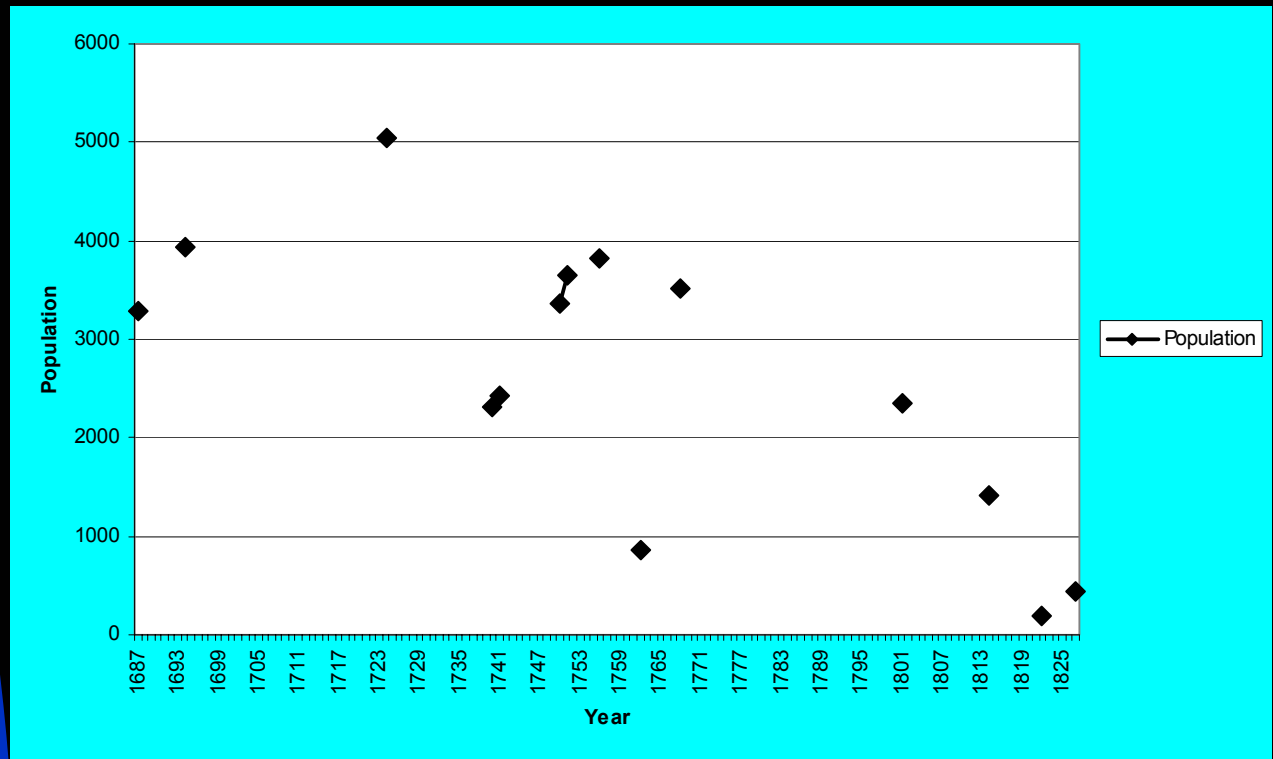
Robert H. Jackson

In the 1680s, the Jesuits returned to the region east of the Uruguay River in what today is Rio Grande do Sul. The Jesuit had first established missions in the region between 1610 and 1630, but were first to withdraw westward because of raids by *bandeirantes* from Sao Paulo.

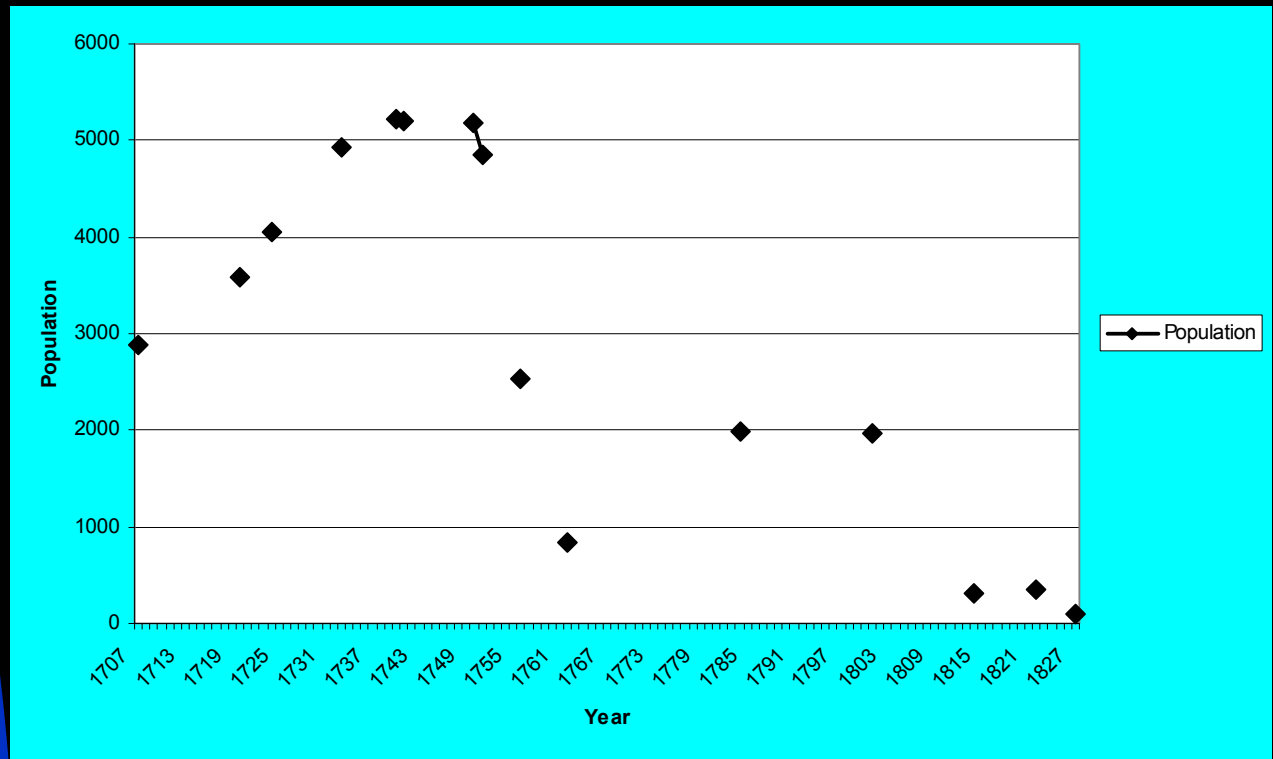
In the 1680s, the Jesuits returned to the region east of the Uruguay River in now what today is Rio Grande do Sul. The Jesuits established San Luis Gonzaga in 1687 with neophytes from Concepcion, and Santo Angel Custodio in 1706 with population from the same mission.

Thousands of Guarani neophytes lived on the two missions, but the numbers fluctuated as a result of out-migration and with the effects of periodic and lethal epidemics. In 1750, Spain and Portugal signed the Treaty of Madrid to adjust boundaries in South America. The Guarani revolted in defense of their homes, but were defeated by a Spanish-Portuguese Army. The defeated Guarani dispersed, and the missions were left in a devastated state.

Population of San Luis Gonzaga Mission, 1687-1827.

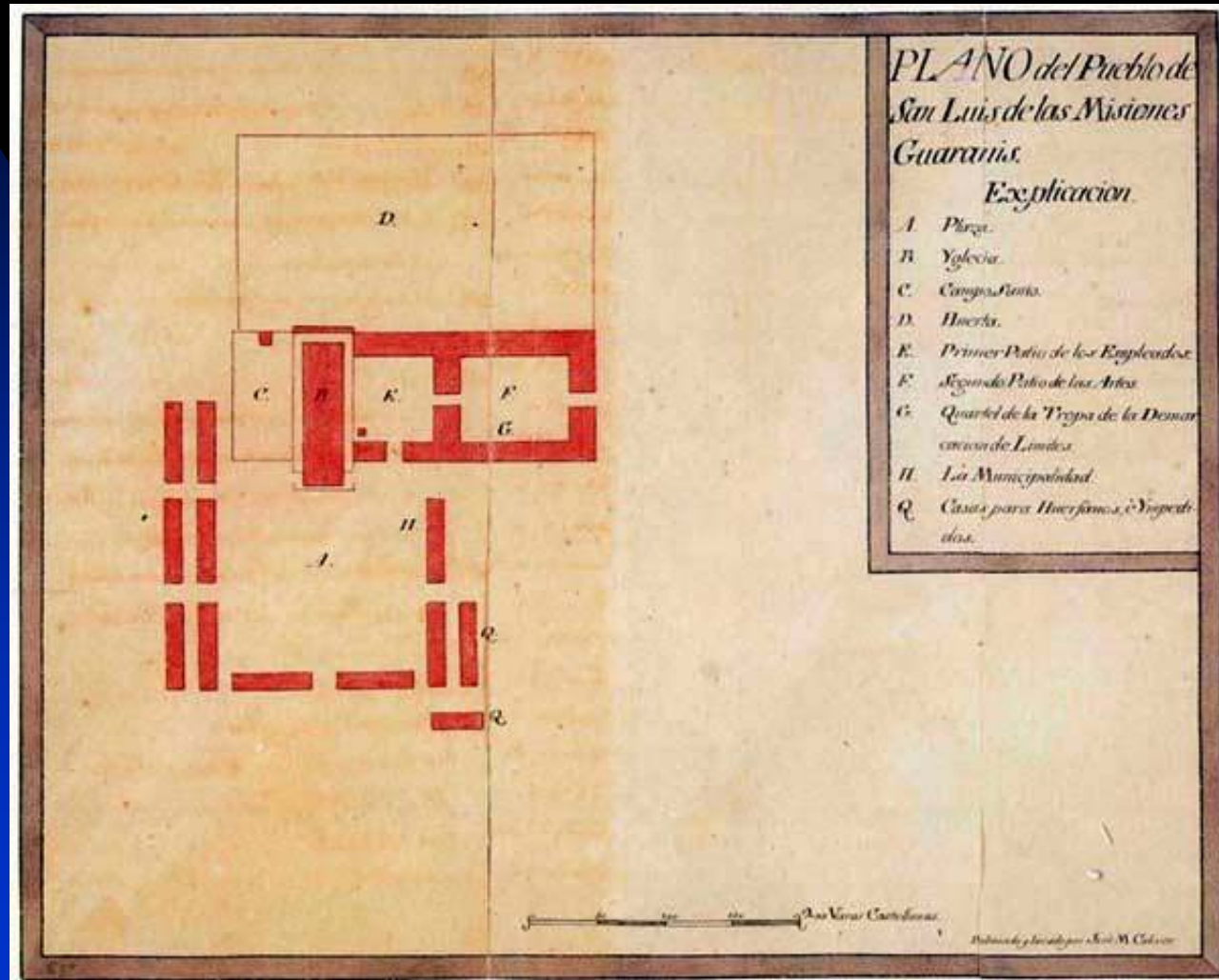


Population of Santo Angel Custodio Mission, 1707-1827.

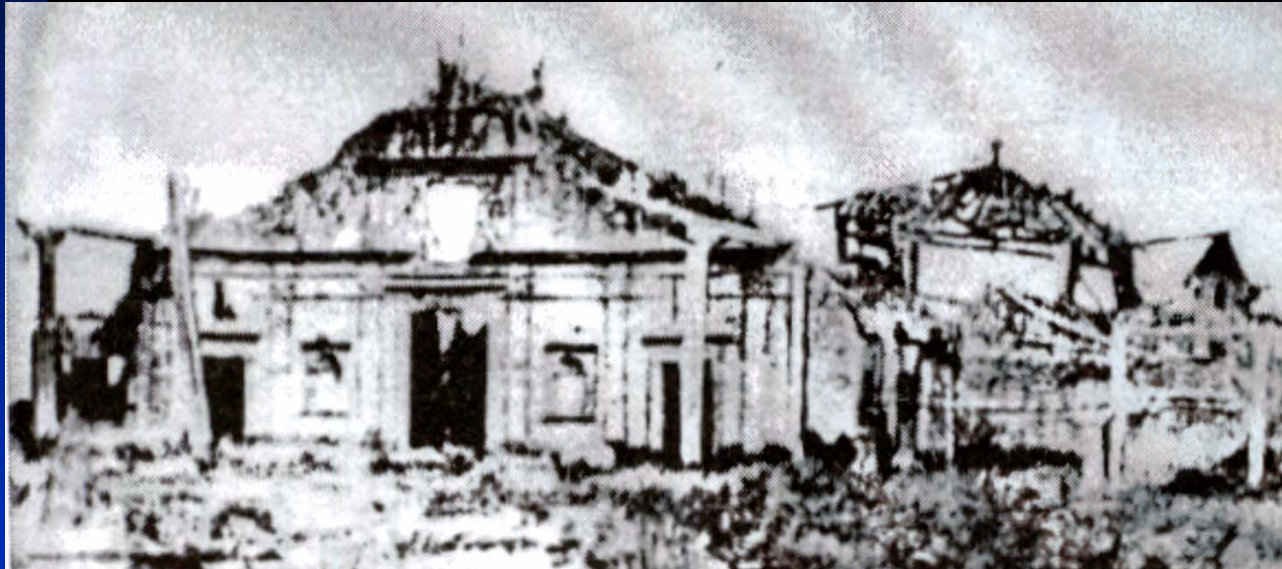


In 1801, Portuguese colonial militiamen occupy the seven Trans-Uruguay missions. Over the next three decades regional conflict disrupted the missions, and hundreds of Guarani left or were removed.

1784 Diagram of San Luis Gonzaga mission.



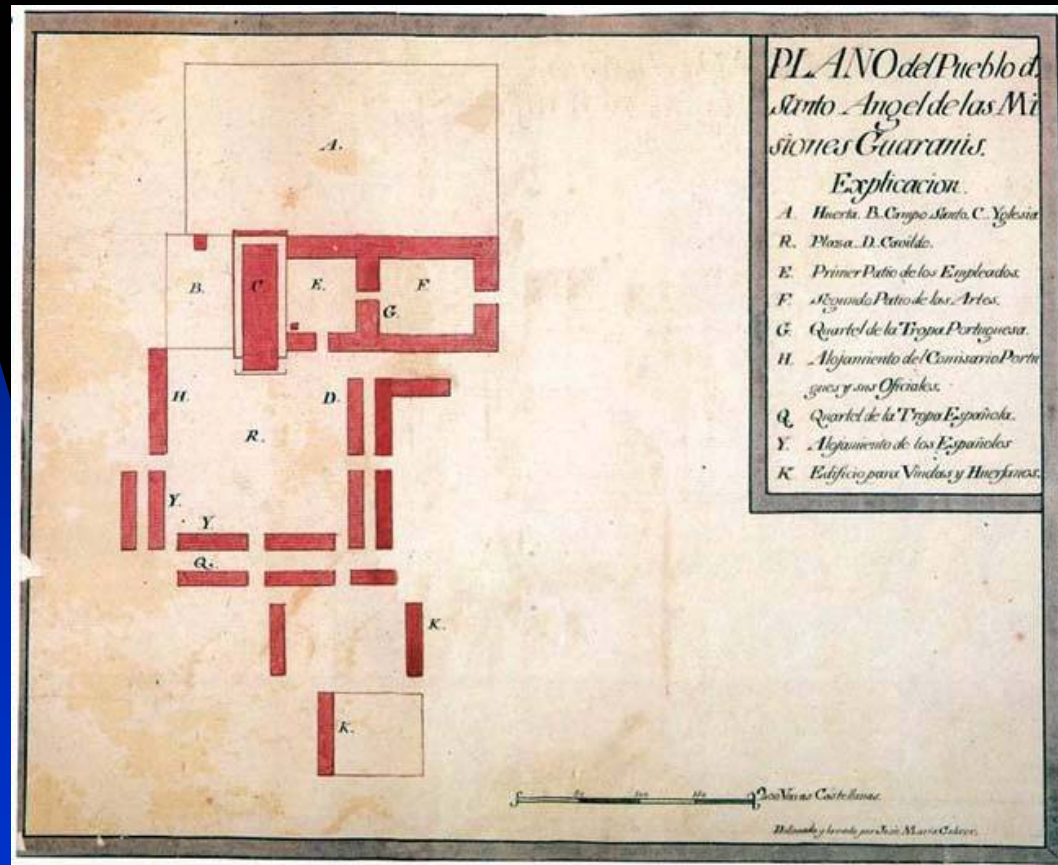
Ruins of San Luis Gonzaga Mission Church in the 1870s.



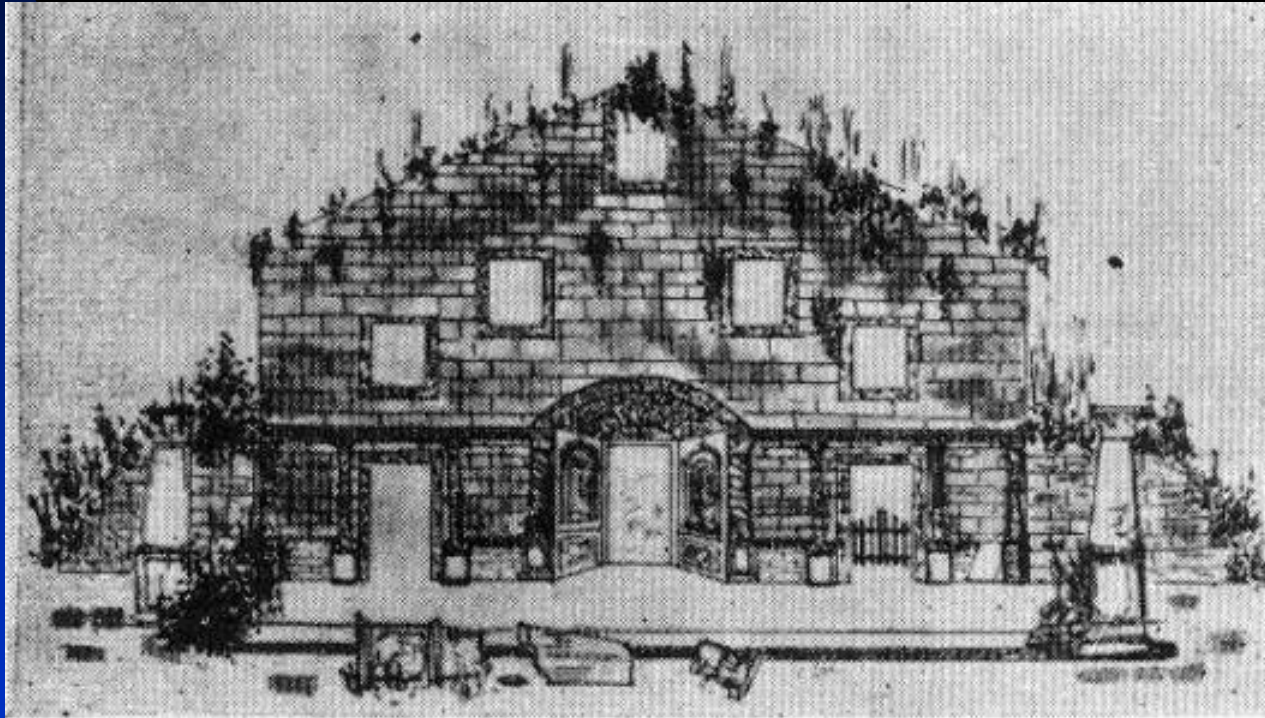
Former neophyte housing at San Luis Gonzaga.



1784 Diagram of Santos Angeles Mission.



19th Century drawings of façade of church of Santo Angel.



Modern church built on the site of the Mission-Era Church.



Ruins of Mission Structure Incorporated into Mission Museum.



Ruins of walls in museum.



Ruins of walls in museum.



Ruins of walls in museum.



Ruins of walls in museum.



Ruins of walls in museum.



Ruins of walls in museum.



Ruins of walls in museum.



Original floor.

