

Missions of New Mexico

Robert Jackson

Introduction. In 1598, an expedition headed by Juan de Onate settled in New Mexico. Onate brought Franciscan missionaries with him to initiate a campaign of acculturation and evangelization.

Between 1598 and 1680, the Franciscans established missions at many of the Pueblos, the communities of sedentary Indians. Many of the churches and conventos were large and imposing fortress-like structures.

**The best examples of
17th century missions
are found in the so-
called Salinas Province
east of Albuquerque.**

Quarai.



A second view of Quarai.



Quarai.



Quarai.

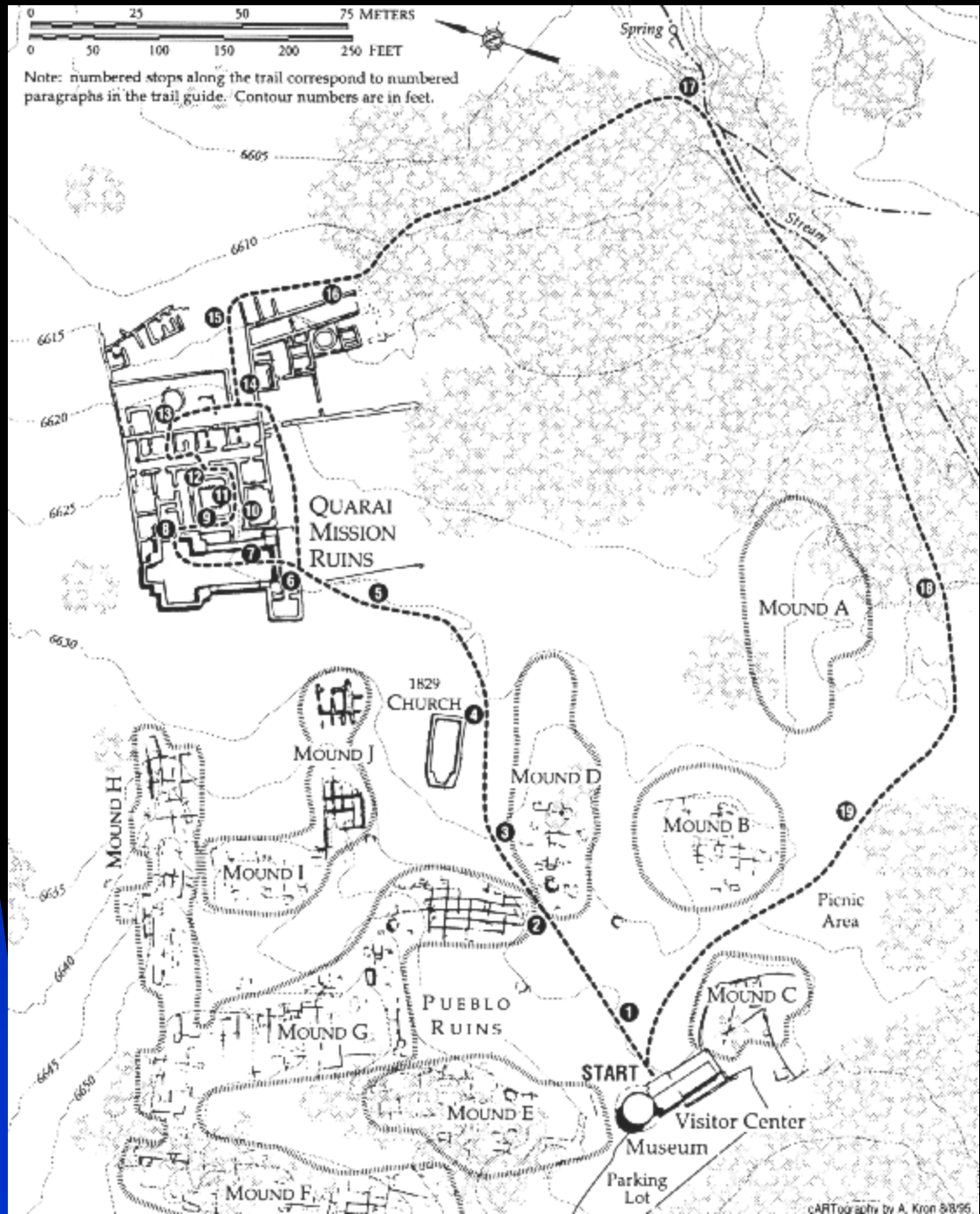


Robert H. Jackson

Quarai.



Quarai.



Abo.



Another view of Abo.



Humanas.



Humanas.



Giusewa, located northwest of Albuquerque. Buildings date to the 1620s.



Tower at the back of the Giusewa church.



Giusewa ruins in the 1920s.



Acoma, built on top of Mesa.



Another view of Acoma.



Ruins of Awatovi mission, destroyed by the Hopi in 1680.



Taos, destroyed during Mexican-American War in late 1840s.



Taos ruins in the 1920s.



Ruins of San Felipe pueblo abandoned in the 1690s.



In 1680, Pueblos revolted, and drove the Spanish out of New Mexico. The Spanish did not reoccupy New Mexico until the mid-1690s. Franciscans returned to rebuilt the missions.

Ruins of 18th century Pecos church built on ruins of 17th century church.



Ruins of Pecos.



Ruins of the Pecos church in the 1920s.



Laguna.



Another view of the Laguna church.



Interior of the church at Laguna.



Picuris.



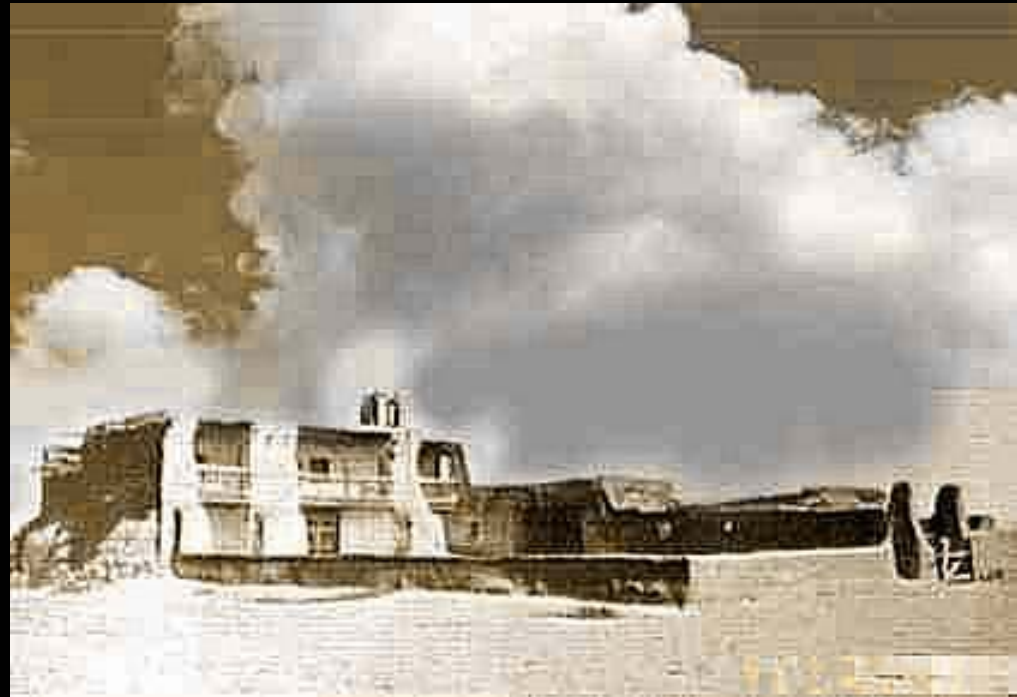
18th century church at San Felipe. 1920s photo.



San Ildefonso.



Santa Ana. 1920s photo.



Ruins of church at Zuni. 1920s photo.



Santa Clara. A 1920s photograph.



Ysleta. A 1920s photo.



Ranchos de Taos. A 1920s photo.



Diagram of church.

