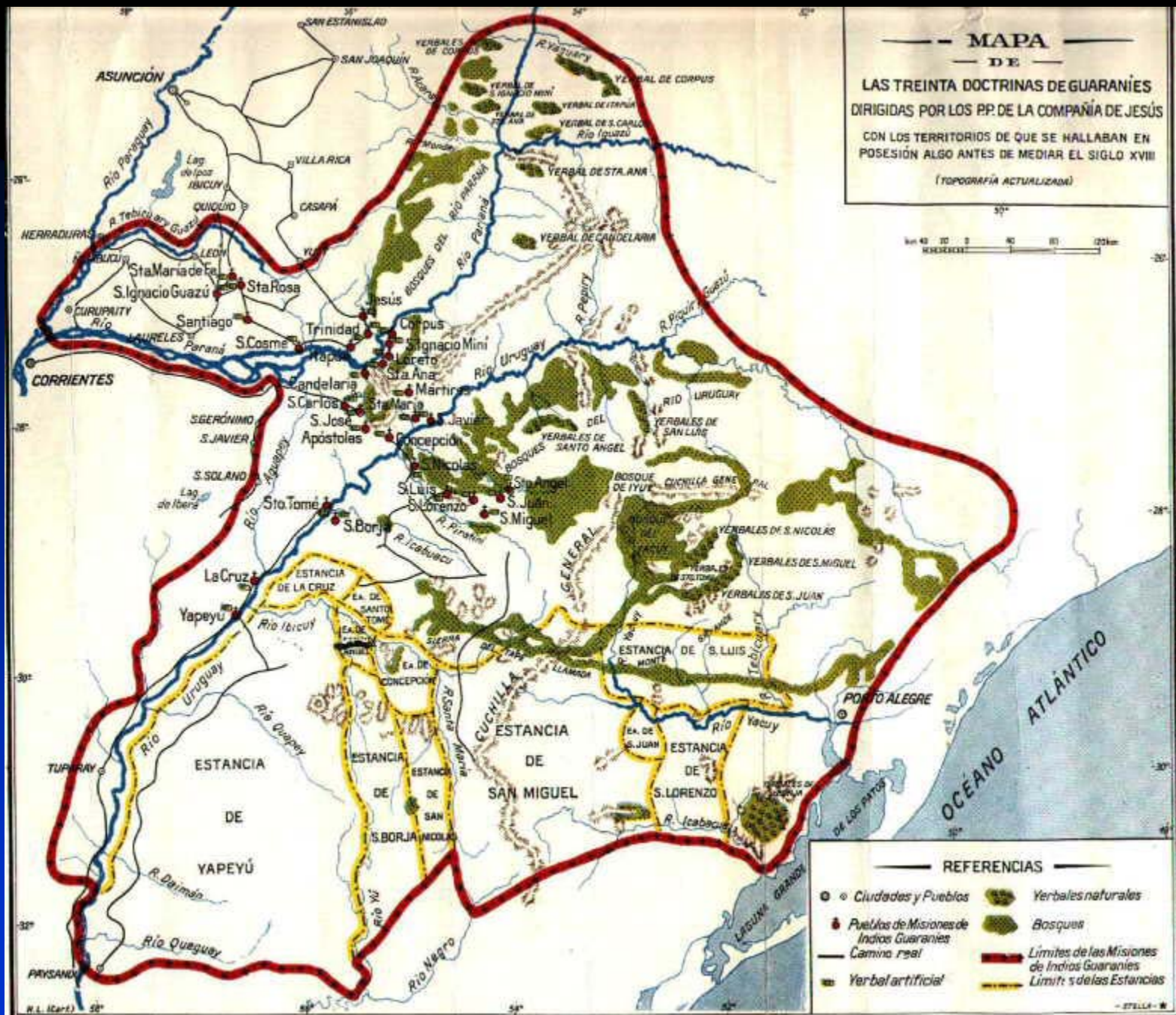


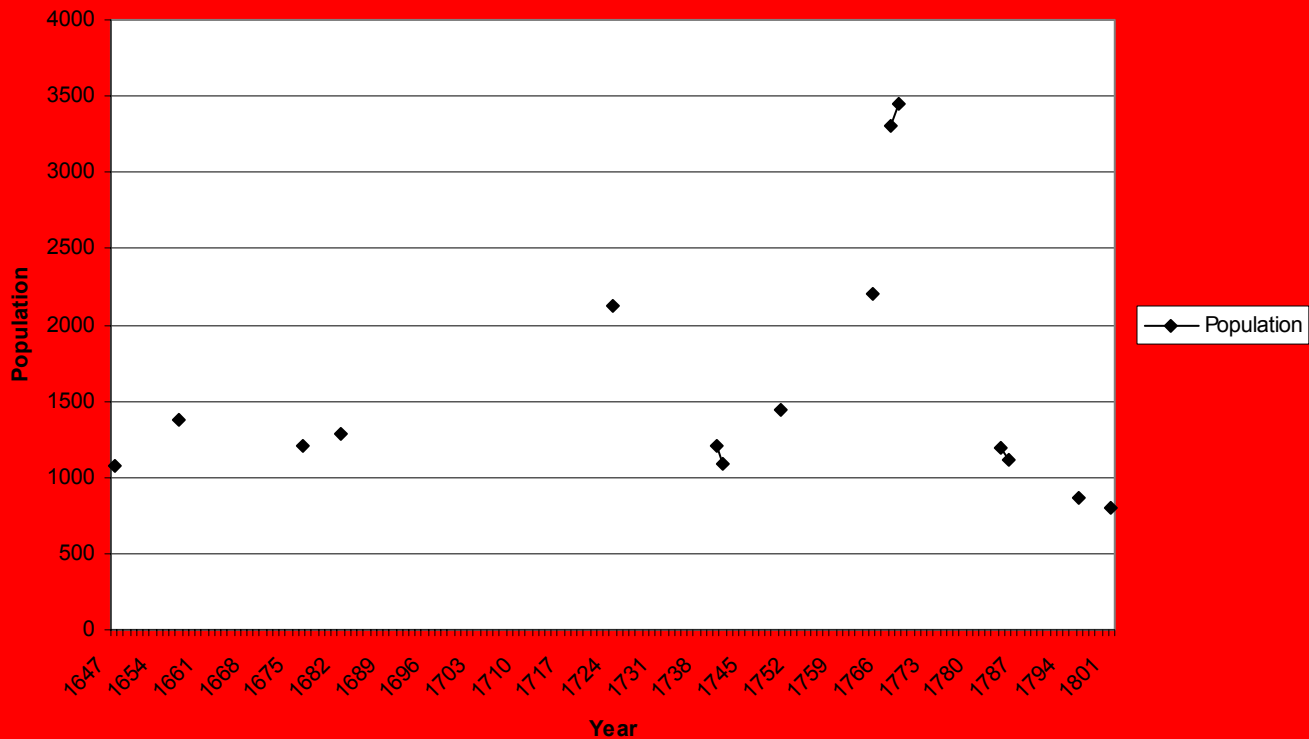
San Cosme y Damian Mission (Paraguay)

Robert H. Jackson

First established in the 1630s, the Jesuit mission San Cosme y Damian occupied several sites until located at its current location in 1760. San Cosme y Damian was one in a larger group of 30 missions.

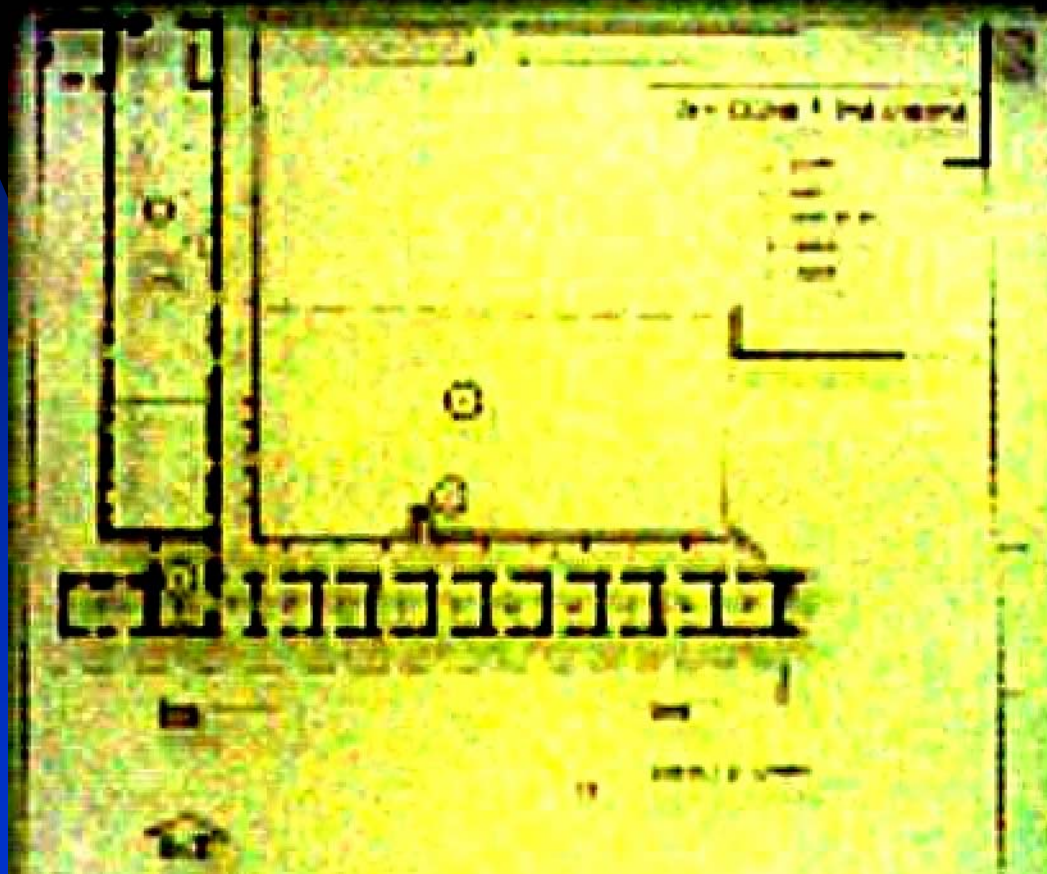


The Jesuits congregated hundreds of Guarani at San Cosme y Damian. The population generally grew, but fluctuated with the affect of epidemics of diseases such as smallpox and measles.



In the short time of seven years, the Jesuit missionaries directed the construction of an extensive building complex at the new site.

Diagram of building complex at San Cosme y Damian

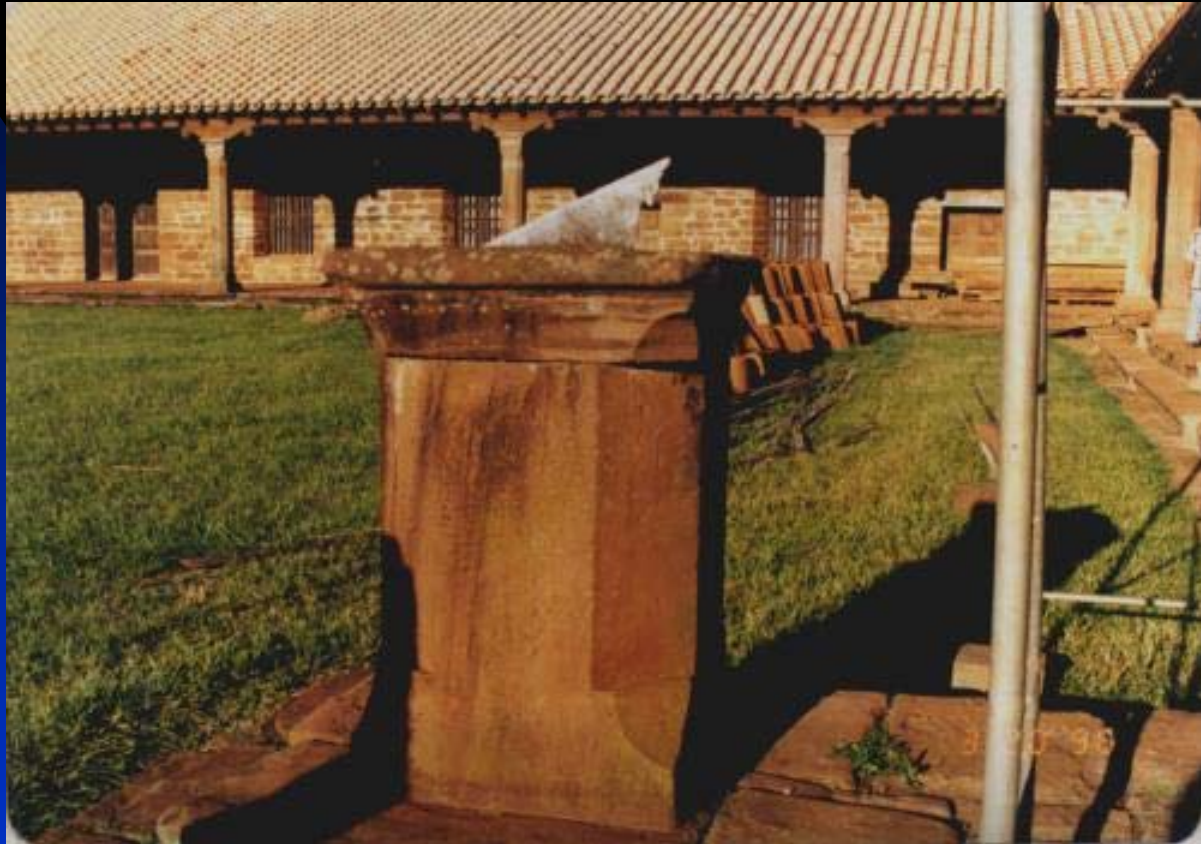


Views of San Cosme y Damian





Robert H. Jackson





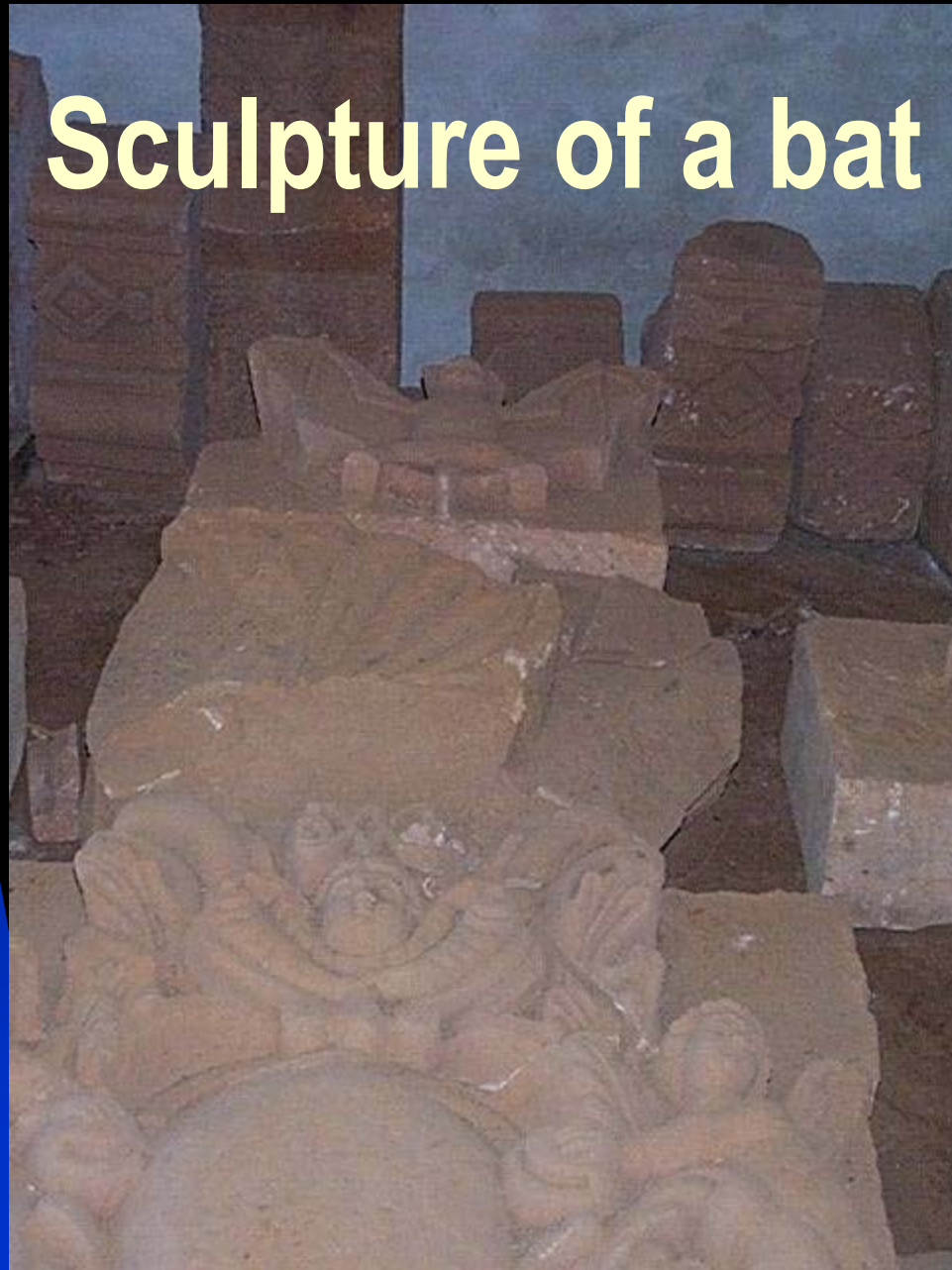


Robert H. Jackson





Sculpture of a bat



Ceiling Decoration

