



# BUSINESS HISTORY CONFERENCE

## 2012, Hyatt Regency, Penn's Landing

Related colloquia and workshops are scheduled for Thursday, March 29, 2012, and the Business History Conference itself begins with 7:00-9:00pm Plenary Session that evening. It runs through Saturday, March 31, 2012. For those looking to explore their host city either Thursday afternoon or Sunday, there are several options. These appear below as: "Old City Philadelphia," "Beyond Independence Mall," and "Short Day Trips;" these last require a car but are all within an hour of downtown.

### A) OLD CITY PHILADELPHIA



**Betsy Ross House, <http://www.betsyrosshouse.org>  
239 Arch Street, (215) 686-1252**

Admission: 10AM to 5PM daily; \$4/ adults and seniors; \$3/ children 12 and under and students; \$6 for the audio tour.

The Betsy Ross House is located in the heart of Philadelphia's most historic square mile, just blocks from Independence Hall and the Liberty Bell. Built more than 250 years ago, The Betsy Ross House was home not just to Betsy Ross, but also to dozens of artisans and shopkeepers over the years before it opened to the public as a museum in 1937.



**Elfreth's Alley, <http://www.elfrethsalley.org>  
126 Elfreth's Alley, on 2<sup>nd</sup> Street, between Race and Arch Streets, (215) 574-0560**

Admission: \$5/adults; \$2/children 6 to 12; open Thurs. through Sun., 11AM to 5PM.

Elfreth's Alley was founded in 1702, and is one of the oldest continuously inhabited residential streets in America. Tours includes a stop at Elfreth's Alley Museum which is located in House 126 and built in 1755 by blacksmith and Alley namesake, Jeremiah Elfreth, and has been restored and furnished to its 1790 appearance; it is the only house on Elfreth's Alley open to the public. Interpretation focuses on the lives of the 18<sup>th</sup> and 19<sup>th</sup>-century laboring class.



**Franklin Court, <http://www.nps.gov/inde/franklin-court.htm>  
314-322 Market Street**

Admission: Franklin Court is open daily 10AM-5PM (Franklin Court Museum Shop until 4:30PM); Printing Office, daily 9AM-5PM; U.S. Post Office, Mon.-Sat. 9AM-5PM. Admission is free, but the Underground Museum is currently closed for renovation.

Franklin Court was the site of Benjamin Franklin's home while he served in the Continental Congress and the Constitutional Convention. Franklin died here in 1790 and the house was torn down about 20 years later. Today the site contains a steel "ghost structure" of the house, an 18<sup>th</sup>-century printing office, and an operating post office and a postal museum. Try the new Independence National Historical Park Cell Phone Audio Tour. Call 267-519-4295, **press Prompt #22** for Franklin Court & Underground Museum information, **Prompt #221** for Glass Armonica Music, **Prompt #23** for Franklin's Market Street Houses (Printing Office, Archeology, Post Office and store) information.



**Historic Christ Church, <http://www.christchurchphila.org>  
2<sup>nd</sup> Street above Market, (215) 922-1695**

Admission: Mon.-Sat., 9AM - 5PM; Sun., 1PM - 5PM. Site is free although a \$2-3 donation is recommended. Tours offered throughout the day. Admission to the Christ Church Burial Ground is \$1/students and \$2/adults; guided tours are \$3.

Christ Church was founded in 1695 and was the first Anglican Church in Pennsylvania and the birthplace of the American Episcopal Church. Its Burial Ground is the final resting place for some of our most prominent leaders including Benjamin Franklin and four other signers of the Declaration of Independence.



**Independence Hall and the Liberty Bell, <http://www.nps.gov/inde/>  
5<sup>th</sup> and 6<sup>th</sup> Streets on Chestnut Street, (800) 537-7676**

Admission: Both sites are free, but Independence Hall does require timed tickets. Pick up free tickets to tour Independence Hall at the Independence Visitor Center (6th & Market Sts.), open daily from 8:30AM to 5PM.

These sites form the heart of the National Park Service's Independence Park; both the Declaration of Independence and Constitution were signed in Independence Hall, and the Liberty Bell—well, it's a Philadelphia icon. Tickets are available from Independence Hall on a first come, first served basis; guided tours are required and last 30 minutes. Visitors might also wish to visit adjacent Congress Hall, the meeting place for the nation's first House of Representatives and Senate.



**Independence Seaport Museum, <http://www.phillyseaport.org>  
211 South Christopher Columbus Blvd., (215) 413-8655**

Admission: Open daily 10AM to 5PM; \$12/adults; \$10/seniors; \$10/children, students, and military personnel

Located on the Delaware River, the Independence Seaport Museum's exhibitions explore the region's rich maritime history. Ticket includes the museum as well as the U.S.S. Olympia, a Spanish-American warship, and the Becuna, a World War II submarine. The museum library is one of the best local maritime research centers with a significant collection of rare books, manuscripts, photographs, maps and charts.



**National Constitution Center, <http://www.constitutioncenter.org>**

525 Arch Street, (215) 409-6700

Admission: Mon.-Fri. 9:30AM-5PM; Sat. 9:30AM-6PM; Sun. Noon-5PM

The National Constitution Center is located two blocks from the Liberty Bell on Independence Mall and is the only museum devoted to the history and contemporary meaning of the U.S. Constitution. The main exhibit hall presents a chronology of constitutional history, as well as artifacts and original documents and interactive exhibits based on the preamble. It also features "talk backs" and ways to discuss the Constitution. "Signers' Hall" features life-sized, cast-bronze sculptures of the 39 signers of the Constitution and the three dissenters.



**National Museum of American Jewish History, <http://www.nmajh.org>  
101 South Independence Mall East, (215) 923-3811**

Admission: Tues. to Fri. 10AM to 5PM; Sat. and Sun., 10AM to 5:30PM; \$12/adults; \$11/ youth from 13 to 21, as well as senior and active military personnel. Children under 12 are free.

The National Museum of American Jewish History, which opened this year, is dedicated to chronicling the American Jewish experience in America. The core exhibition, beginning on the fourth floor, is entitled *Foundations of Freedom, 1654-1880*, and examines the democratic principles that early Jewish immigrants embraced and incorporated into their own emerging communities. Additional exhibitions extend through the 20<sup>th</sup> century, and a special exhibition explores the Jewish experience during the Civil War.

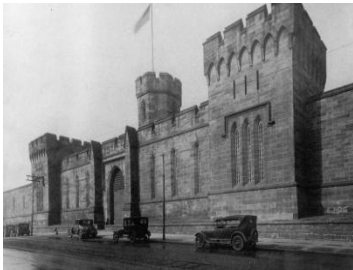
## **B) BEYOND INDEPENDENCE MALL**



**The African American Museum of Philadelphia, <http://aampmuseum.org>  
701 Arch Street, (215) 574-0380**

Admission: Tuesday thru Saturday: 10 AM to 5 PM; Sunday: 12 noon to 5 PM; Adults \$10; Children \$8; Students \$8; Senior Citizens \$8.

The African American Museum of Philadelphia (AAMP) is the first institution funded and built by a major municipality to preserve, interpret and exhibit the heritage of African Americans. It houses an amazing collection of objects and illustrations that chronicle and dramatically unfold the incredible story of the black diaspora. It includes a tremendous assortment of art, artifacts, period clothing, furniture, military weapons, industrial tools, musical instruments, photographs, and diaries.



**Eastern State Penitentiary, <http://www.easternstate.org>  
2027 Fairmount Park, (215) 236-3300**

Admission: \$12/adults; \$10/seniors; \$8/students and children

Founded on principles of reform rather than penalization, Eastern State broke sharply with other prisons of its day, abandoning corporal punishment and ill treatment. This massive structure, opened in 1829, became one of the most expensive American buildings of its day and soon the most famous prisons in the world.



**Fairmount Water Works Interpretive Center,  
<http://www.fairmountwaterworks.org>  
640 Waterworks Drive, (215) 685-0723**

Admission: Free; Tuesday through Saturday: 10AM to 5PM; Sunday, 1-5PM.  
Closed Mondays and city holidays.

Philadelphia was the first large American city to regard safe water as a municipal responsibility. In the late 1700s yellow fever epidemics — then thought by some to be a water-borne disease — compelled civic leaders to name a Watering Committee to assure a constant supply of uncontaminated drinking water. Adjacent to the Philadelphia Museum of Art, the Fairmount Water Works Interpretive Center tells the story of the Schuylkill River and its human connections. It is a valuable tale with timeless lessons about the need to balance the demands of development with the natural resources that make development possible.



**Kimmel Center for the Performing Arts,**  
<http://www.kimmelcenter.org/planning/tours.php>  
**260 South Broad Street, (215) 790-5886**

Admission: Free, but limited to groups of 20. One hour tours are offered at 1PM daily, on a first-come, first-served basis (no tours on Mon.). Specialty Art & Architecture tours are offered at 10:30AM on Sat.

Visit Philadelphia’s premier performing arts center. Standard tours include a history of the Kimmel Center, architectural highlights, and visits to most theatres and the indoor, sky-high garden; architecture and art tours focus on the building’s galleries and art collections.



**Mummer’s Museum,** <http://www.mummersmuseum.org>  
**1100 2<sup>nd</sup> Street, (215) 336-3050**

Admission: Wed.-Sat. 9:30AM to 4:30PM; \$3.50/adults; \$2.50/children, students and seniors

The Mummer’s Museum opened in 1976, and is dedicated to the Philadelphia celebration of the New Year, a tremendous costumed parade held each January 1. The museum houses a rich collection of mummies' paraphernalia and memorabilia, including spectacular costumes, a few of which date back to the turn of the 20<sup>th</sup> century.



**Mütter Museum,** [http://www.collphyphil.org/Site/mutter\\_museum.html](http://www.collphyphil.org/Site/mutter_museum.html)  
**19 South 22<sup>nd</sup> Street, (215) 563-3737**

Admission: 10AM-5PM daily; \$14/adults; \$10/children, students, and seniors

The Mütter Museum was founded in the 19<sup>th</sup> century to educate future doctors about anatomy and human medical anomalies. Today, it serves as a valuable resource about the history of science and medicine. Its collection includes fluid-preserved anatomical and pathological specimens; skeletal and dried specimens, medical instruments and apparati; anatomical and pathological models in plaster, wax, papier-mâché, and plastic; memorabilia of famous scientists and physicians; medical illustrations, photographs, prints, and portraits.



**Pennsylvania Academy of Fine Arts,** <http://www.pafa.org>  
**118 North Broad Street, (215) 972-7600**

Admission: Tuesday - Saturday 10AM – 5PM.; Sunday 11AM- 5PM; \$10/adults; \$8/seniors and students with I.D; \$6/youth age 13 - 18; children under 12, free. There are additional fees for special exhibitions.

Since its founding in 1805, the Pennsylvania Academy of the Fine Arts has fostered and collected American art, ranging from colonial masters such as Robert Feke, John Singleton Copley, and Benjamin West, to major contemporary artists including Richard Diebenkorn, Red Grooms, and Faith Ringgold. Many of the nation's most important artists were founders, teachers or students at the Pennsylvania Academy, including Charles Willson Peale, William Rush, Thomas Sully, Thomas Eakins, Thomas Anshutz, Mary Cassatt, Cecilia Beaux, William Merritt Chase, Henry Ossawa Tanner, Charles Grafly, Maxfield Parrish, Robert Henri, John Sloan, William Glackens, Everett Shinn, George Luks, Violet Oakley, Arthur B. Carles, Daniel Garber, and Robert Gwathmey—all of whom are represented in the Academy's collection.



**Simeone Foundation Automotive Museum, <http://simeonemuseum.org>  
6825-31 Norwicht Dr., (215) 365-7233**

Admission: Tues. to Fri. 10AM -6PM, and Sat. and Sun. 10AM-4PM. Tickets are \$12/adults; tickets must be purchased online in advance at <http://simeonemuseum.org/about-us/purchase-tickets-on-line>

Assembled by renowned neurosurgeon Dr. Frederick Simeone over half a century, the museum contains over 60 of the rarest and most significant racing sports cars ever built, ranging from 1909 to the present. Cars include examples from the U.S., Italy, Germany and other European nations.

### C) SHORT DAY TRIPS



**Batsto Village and Mansion, <http://www.batstovillage.org>  
(approximately 50 min. from Philadelphia)**

**31 Batsto Road, Hammonton, NJ (609) 561-0024**

Admission: Open daily 9AM to 4PM. Access to the museum and grounds is free; tours of the mansion are \$2/adults and \$1/children 6-11.

Founded in 1766, the Batsto Iron Works used local bog ore, timber and waterways to produce a variety of iron metal wares for home and military use. In the mid-nineteenth century, the company shifted to glassmaking, and ultimately to a variety of forestry and agricultural endeavors. By the early twentieth century, most industrial work had ended and the property, while maintained by a trust and still home to families of some former workers, had largely fallen into disuse. In the 1950s the state

initiated plans to restore and utilize the property; in 1989, the last residents left the village which has subsequently been reopened as a museum and historic site.



**Crayola Factory, <http://www.crayola.com/factory>  
(approximately 60 min. from Philadelphia)**

**30 Centre Square, Easton, PA, (866) 875-5263**

Admission: Tues.-Fri. 9:30AM-3:00 PM; Sat.-Sun. 9:30AM-5:00PM; \$9.75/adult; \$9.25/senior; \$8.75/military discount.

At The Crayola Experience™ visitors enter a world of discovery as they experience more than a dozen hands-on activities as well as learn how Crayola Crayons® and Markers are made. This is not the real manufacturing plant. It's a colorful and

interesting visitor center that allows children of all ages to unleash their creative spirit. Themes and projects change periodically to give visitors a variety of projects to create throughout the year.



**Hagley Museum and Library, <http://www.hagley.org>  
(approximately 45 min. from Philadelphia)**

**200 Hagley Road, Wilmington, DE, (302) 658-2400**

Admission: Open daily from 9:30AM to 5PM. Tickets are \$11/adults; \$9/students and senior citizens; \$4/children 6-14, and under 6 free.

Hagley Museum and Library collects and interprets the unfolding history of American enterprise. Located on 235 acres along the banks of the Brandywine River in Wilmington, Hagley is the site of the gunpowder works founded by E. I. du Pont in 1802. This example of early American industry includes restored mills, a workers' community, and the ancestral home and gardens of the du Pont family.



**Heritage Glass Museum, <http://heritageglassmuseum.com>**

**25 E. High Street, Glassboro, NJ, (856) 881-7468**

Admission: Sat. 11AM to 2PM; Wed. Noon-3PM, and fourth Sun. 1-4PM. There is no admission fee, but a small donation is encouraged.

Glassboro's glass history began on September 23 1779 when Solomon Stanger and his family (migrating from Dorhagen, Germany) established a "glass works in the woods" of Gloucester County, NJ. The Stangers selected the area because the quality of the sand, abundance of oak trees for fuel, and the closeness to Philadelphia -- a prime area for commerce. Examples of historic bottles, glass, and related items are on display.



**Hopewell Furnace National Historic Site, <http://www.nps.gov/hofu/index.htm>  
(approximately 60 min. from Philadelphia)**

**2 Mark Bird Lane, Elverson, PA, (610) 582-8773**

Admission: Open Wed. to Sun. 9AM to 5PM. Visitor's Center and grounds are open Mon. and Tues., but historic buildings are closed. Admission is free.

Hopewell Furnace showcases an early American industrial landscape from natural resource extraction to enlightened conservation. Operating from 1771-1883, Hopewell and other "iron plantations" laid the foundation for the transformation of the U.S. into an industrial giant. The park includes 848 acres and several historic structures.



**Longwood Gardens, <http://www.longwoodgardens.org>  
(approximately 45 min. from Philadelphia)**

**1001 Longwood Road, (610) 388-1000**

Admission: Open daily from 9AM to 5PM. Tickets are \$18/adults; \$15/seniors; \$8/children and students; children under 4 are free.

Longwood Gardens, founded by Pierre S. DuPont, consists of over 1,000 acres of gardens, woodlands, and meadows in Kennett Square, in the Brandywine Creek Valley. It is one of the premier botanical gardens in the United States and is open to visitors year-round to enjoy exotic plants and horticulture (both indoor and outdoor), events and performances, seasonal and themed attractions, as well as take part in educational lectures, courses and workshops.



**Mercer and Fonthill Museums, <http://www.mercermuseum.org>  
(approximately 60 min. from Philadelphia)**

**84 South Pine Street, Doylestown, PA, (215) 345-0210**

Admission: Mon.-Sat. 10AM-5PM; Sun. Noon-5PM; tickets to just the Mercer Museum are \$10/adult; \$9/senior; \$6/children 6-17 and children under 5 free. Tickets to both the Mercer and Fonthill Museums are \$18/adult and \$10/children.

In the late 19th and early 20th centuries, Henry Mercer collected pre-industrial hand tools and other implements of the past. He believed that the story of human progress and accomplishments was told by the tools and objects that people used and saw these time-honored crafts slowly disappearing from memory. Mercer personally designed plans for a museum to house his collection, six stories tall and cast of poured-in-place concrete, completed in 1916. In addition to tools, it displays furnishings of early America, carriages, stove plates, a gallows, antique fire engines, a whaleboat, and the Lenape Stone.



**Winterthur Museum and Library, <http://www.winterthur.org>  
5105 Kennett Pike, (800) 448-3883  
(approximately 45 min. from Philadelphia)**

Admission: Tues.-Sun. 10:00AM to 5:00PM (last tour ticket sold at 3:15PM). Tickets are \$18/adults; \$16/students and seniors; \$5/children 2-11, and under 2 free.

Winterthur was the former home of Henry Francis du Pont (1880–1969), a renowned antiques collector and horticulturist. There are 175 period-room displays in the museum and approximately 85,000 objects. Most

rooms are open to the public on small, guided tours. The collection spans more than two centuries of American decorative arts, notably from 1640 to 1860, and contains some of the most important pieces of American furniture and fine art. The Winterthur Library and Research Center includes more than 87,000 volumes and approximately 500,000 manuscripts and images, mostly related to American history, decorative arts, and architecture. The facility also houses extensive conservation, research, and education facilities.

### **THOSE INTERESTED IN RESEARCH OPPORTUNITIES IN PHILADELPHIA MAY WISH TO VISIT ONE OF THE CITY'S PREMIER ARCHIVES OR LIBRARIES:**

**American Philosophical Society: 105 South 5<sup>th</sup> Street, (215) 440-3400, <http://www.amphilsoc.org>**

The American Philosophical Society, founded in 1769 as the first scholarly society for scientific study in North America.

- Open Monday-Friday 9AM-5PM

**Athenaeum: 219 South 6<sup>th</sup> Street, (215) 925-3755, <http://www.philaathenaeum.org>**

The Athenaeum was founded in 1814 to collect materials "connected with the history and antiquities of America, and the useful arts, and generally to disseminate useful knowledge" for public benefit.

- Monday through Friday 9AM-5PM
- First Saturdays 11AM-3PM

**Chemical Heritage Foundation: 315 Chestnut Street, (215)925-2222, <http://www.chemheritage.org>**

The Chemical Heritage Foundation (CHF) fosters an understanding of chemistry's impact on society, and holds major collections of instruments, fine art, photographs, papers, and books.

- Monday through Friday 10AM-4PM

**Historical Society of Pennsylvania: 1300 Locust Street, (215) 632-6200, <http://www.hsp.org>**

The Historical Society of Pennsylvania was founded in 1824 and is one of the oldest historical societies in the United States.

- Monday Closed
- Tuesday and Thursday 12:30-5:30PM (last admittance at 4:45PM)
- Wednesday 12:30-8:30PM (last admittance at 7:45PM)
- Friday 10AM-5:30PM (last admittance at 4:45PM)

**Library Company of Philadelphia, 1314 Locust Street, (215) 546-3181, <http://www.librarycompany.org>**

The Library Company of Philadelphia was founded in 1731 by Benjamin Franklin as North America's first subscription library.

- Open Monday-Friday 9AM-4:45PM

**Independence Seaport Museum and Library, 211 South Columbus Blvd., (215) 413-8655, <http://www.phillyseaport.org>**

The Independence Seaport Museum and Library, one of the region's best maritime research centers.

- Open daily 10AM to 5PM